



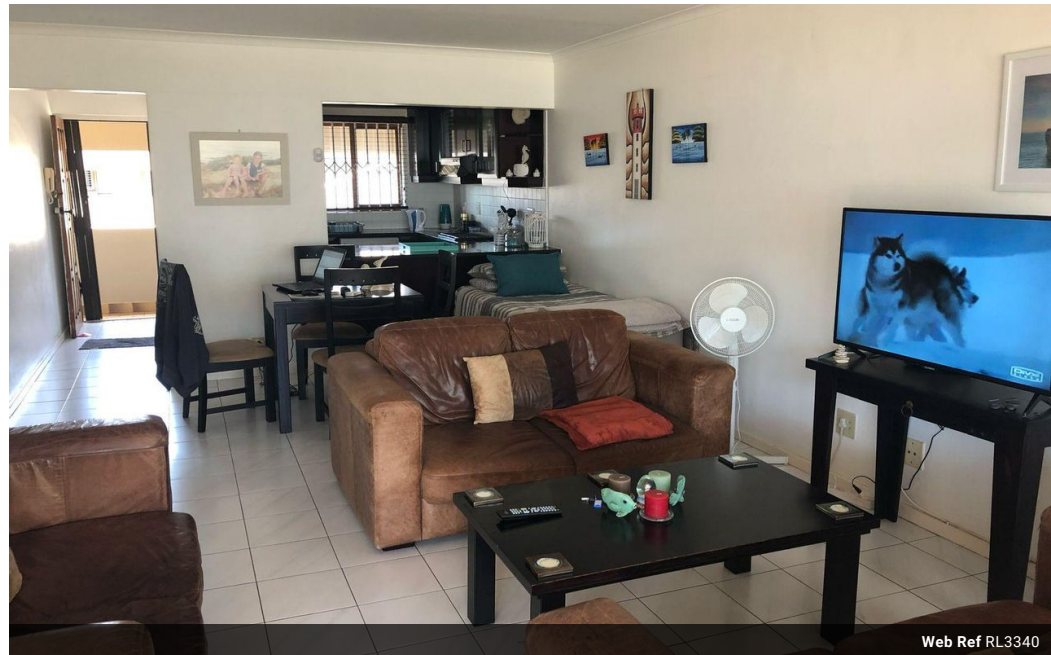
Nicci Francis
0825778711
nicci@therealtyboutique.com

Contact Head Office

084 6939999

Shop 46 - Protea Mall
1 Lighthouse Road
Umhlanga Rocks

2 Bedroom Apartment For Sale in Umhlanga Central



Web Ref RL3340



R1,795,000

2 2 1

Monthly Bond Repayment R18,527.78

Calculated over 20 years at 11% with no deposit.

Transfer Costs R60,739.00 **Bond Costs** R30,875.00

These calculations are only a guide. Please ask your conveyancer for exact calculations.

Monthly Levy R2,247

2 Bedroom apartment

Live in this spacious but cosy apartment that is close to the beach close to all access roads and schools in the area.

This very homely apartment is in a well run complex that has 1 lock up garage and an open bay parking.

Beautiful pool area to spend some down time.

Make your viewing today

Features

Interior

Bedrooms	2
Bathrooms	2
Kitchens	1
Recep. Rooms	2
Furnished	No

Exterior

Garages	1
Carports / Parkings	1
Security	Yes
Pool	Yes
Views	No

Sizes

Floor Size	33m²
------------	------

Extras

Lock Up Garage Communal Pool Braai Area Fans Built In Cupboards Fitted Stove

